



Cementine

Handmade Design Floors





Le Cementine



- RESISTENTI
- REALIZZATE A MANO
- INFINITI DISEGNI
- COLORI A SCELTA



ORIGINI

Le cementine o pastine di cemento, sono mattonelle a più strati, nate a fine '800 dietro l'esigenza di una velocità di posa maggiore rispetto alla "veneziana" pur conservando grande attenzione al decoro e al disegno.



La parte inferiore delle cementine è composta da cemento e sabbia mentre la parte superiore "nobile" è composta da polvere di marmo, cemento bianco ed ossidi colorati. Il tutto viene colato a mano in forme e pressato.

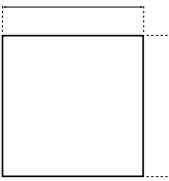
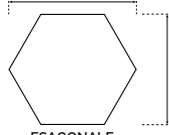


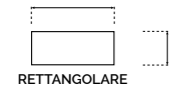

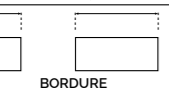
LIBERTÀ ESPRESSIVA

Con l'utilizzo di matrici si possono creare motivi personalizzati su progetto. Ogni pezzo è unico: le nostre cementine sono fatte ancora come una volta, realizzate a mano una ad una.



Eventuali variazioni cromatiche e dimensionali sono peculiarità ed elemento distintivo di una lavorazione interamente manuale dei prodotti.

Scheda Tecnica Dimensioni Cementine

Modello	Dimensioni (cm)	Colori/Disegni
 QUADRATO	7x7	Colori in tinta unita (disegni su richiesta)
	10x10	Colori in tinta unita (disegni su richiesta)
	15x15	A04, C04, C06, C13, F14, S02, O05
	17,5x17,5	Colori in tinta unita (disegni su richiesta)
	20x20	Disegni catalogo (colori personalizzabili)
	25x25	Colori in tinta unita (disegni su richiesta)
	30x30	Colori in tinta unita (disegni su richiesta)
 ESAGONALE	15x17,5 (lato=8,5)	Colori in tinta unita e modello bicolore <i>coin</i>
	20x23 (lato=11,5)	Disegni catalogo
	25x29 (lato=14,5)	Colori in tinta unita (disegni su richiesta)
 ROMBOIDALE	16x27,5 (lato=16)	Colori in tinta unita (disegni su richiesta)
	22x39,5 (lato=23)	Colori in tinta unita e disegni catalogo
 OTTOGONALE	20x20 (lato=7, lato=10)	Colori in tinta unita (disegni su richiesta)
 RETTANGOLARE	5x20	Colori in tinta unita e disegni catalogo
	10x20	Colori in tinta unita e disegni catalogo
 BATTISCOPA (normale e sagomato)	10x20	Colori in tinta unita e disegni catalogo
 BORDURE (quadrato e rettangolari)	20x20	Colori in tinta unita e disegni catalogo
	10x20	Colori in tinta unita e disegni catalogo

Le cementine sono prodotte a mano, una ad una, dunque è possibile richiedere variazioni di colore senza costi aggiuntivi e realizzare modelli su progetto.

Lo **spessore** delle cementine è di 16mm. ma su richiesta possono essere realizzate con spessori fino a 14mm.

Con un trattamento adatto (idrorepellente e antimacchia) le cementine possono essere posate in cucina, in contatto diretto con l'acqua e all'esterno, a pavimento.

Come si evince dal nostro listino, il prezzo delle cementine varia in base al numero dei colori ed alle misure.

Si effettuano due modalità d'ordine (in base ai mq e i tempi di consegna):

- 1) **La pronta consegna:** si riferisce alle cementine pronte presso il nostro deposito con consegna entro 4/7 giorni lavorativi.
- 2) **Produzione su misura:** i tempi di consegna variano dai 30 ai 60 giorni secondo il trasporto concordato. Abbiamo la modalità "trasporto express e produzione prioritaria" con consegna entro 30 giorni dall'ordine.



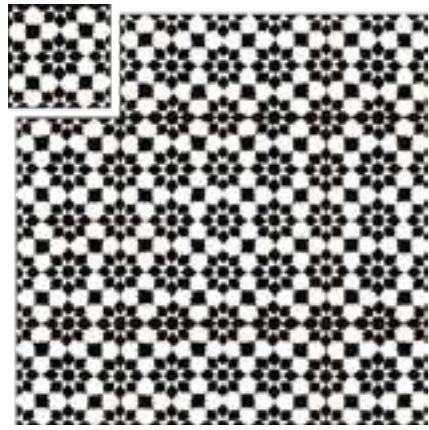
Palette Colori Base



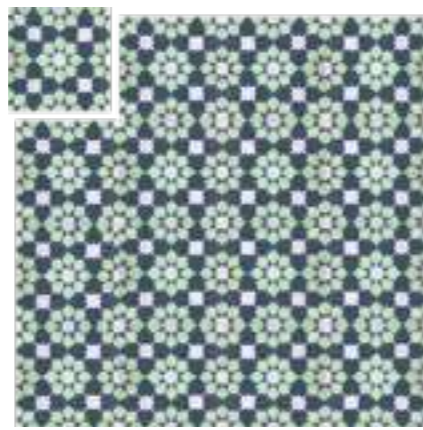
Palette Colori Nature



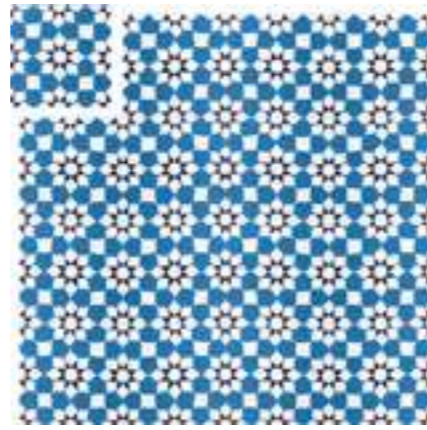
ARABESQUE



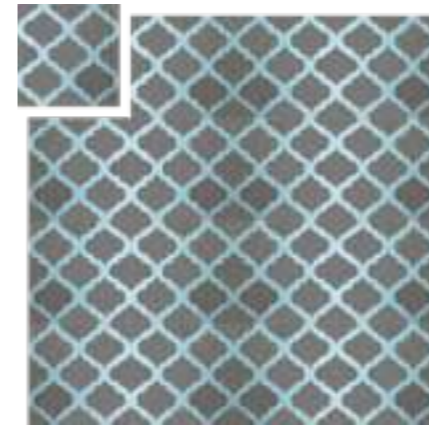
A01



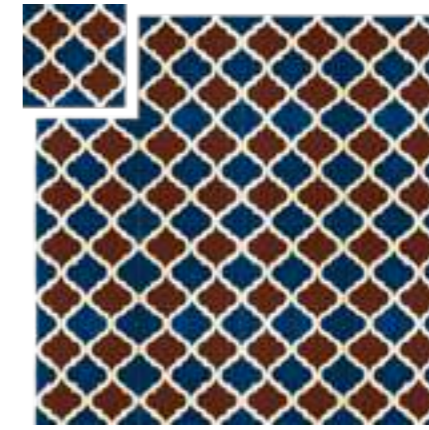
A01-1



A01-2



A04-3



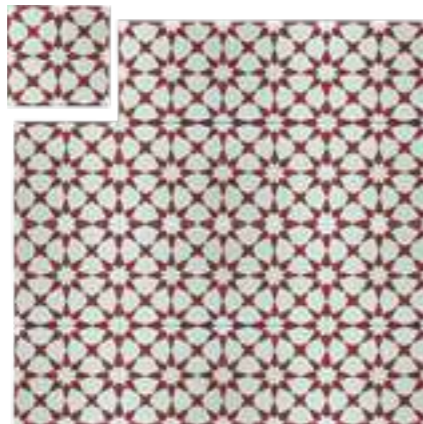
A04-4



A05-1



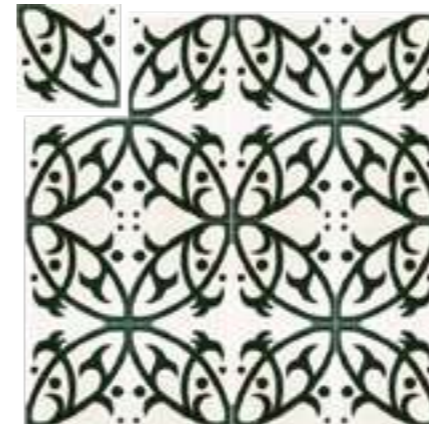
A02



A02-1



A03-1



A06



A06-1



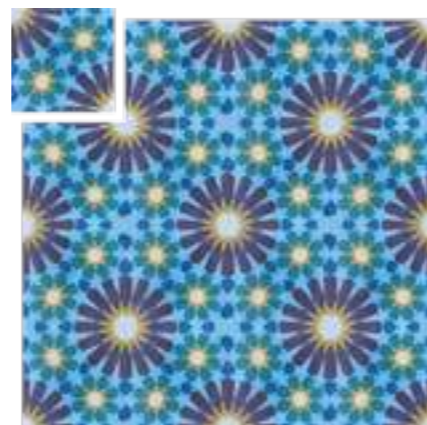
A06-2



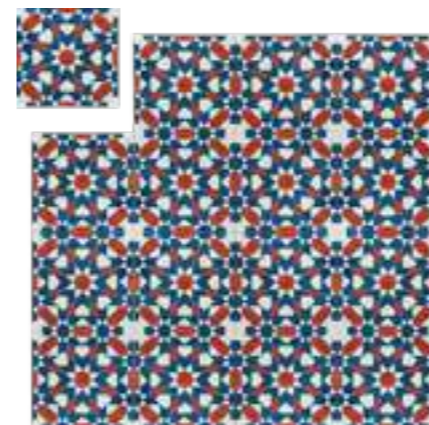
A03-2



A03-3



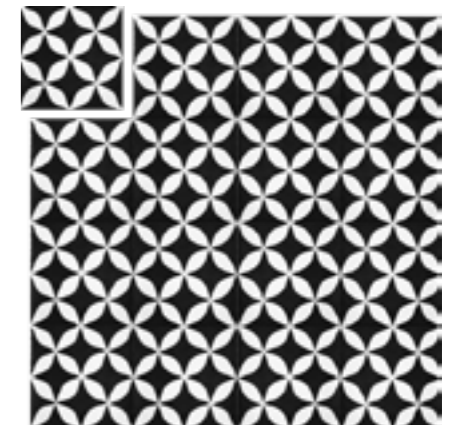
A03-4



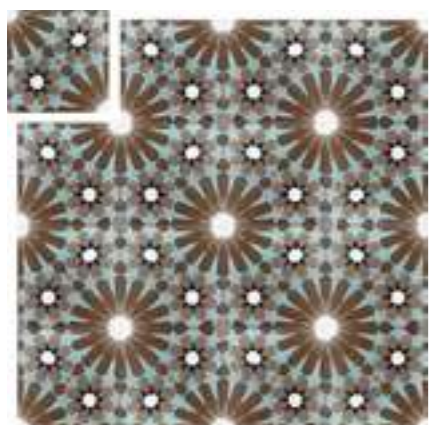
A07-1



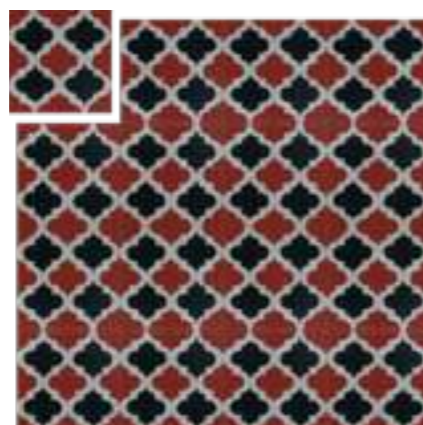
A08-1



A09



A03-5



A04-1



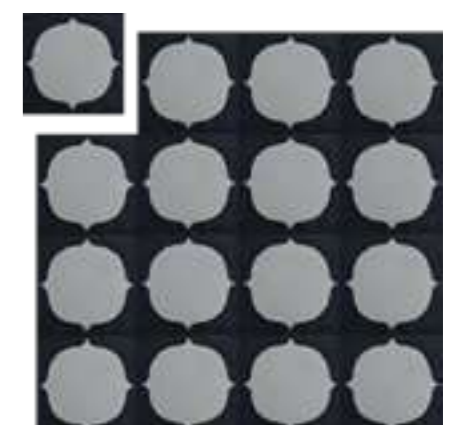
A04-2



A09-1



A10



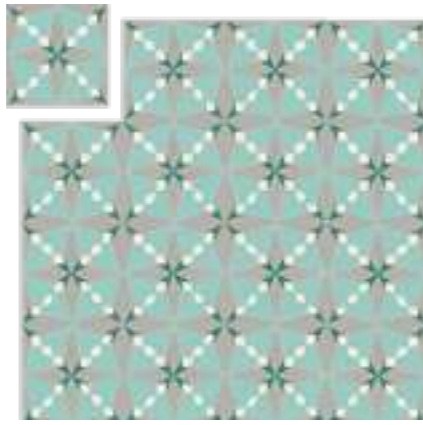
A11

ARABESQUE

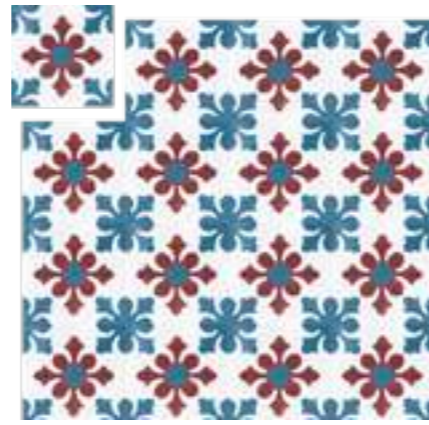
CLASSIC



C01-1



C02-1



C03-1



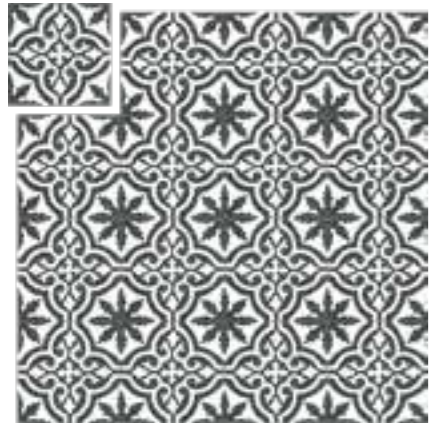
C05



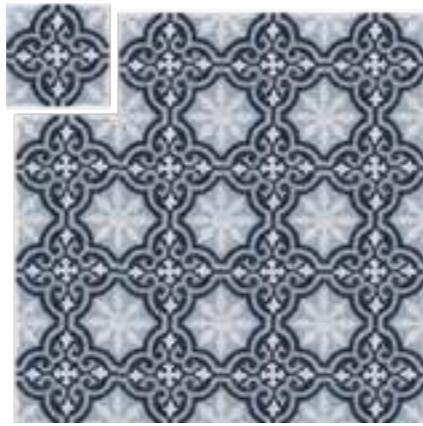
C05-1



C06-1



C04



C04-1



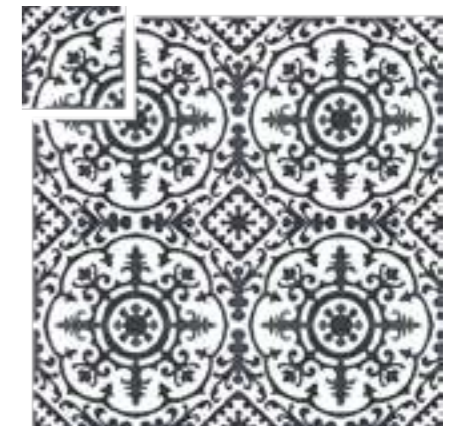
C04-2



C07-1



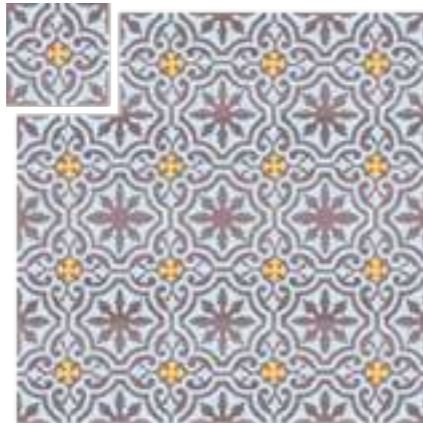
C07-2



C08



C04-3



C04-4



C04-5



C08-1



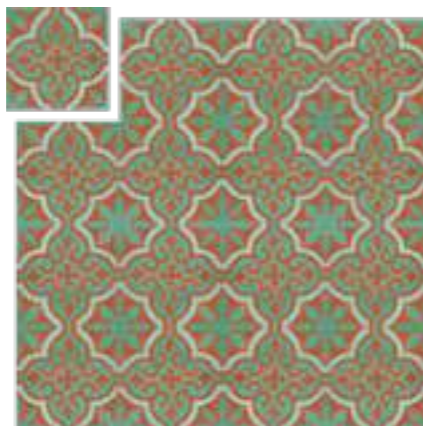
C08-2



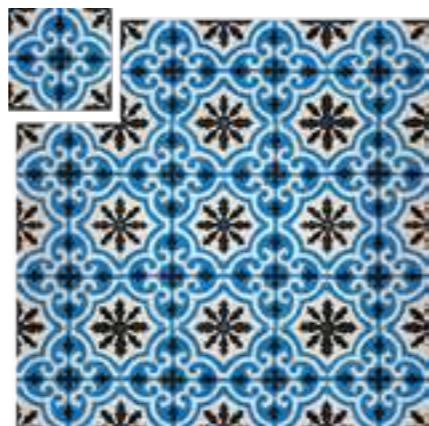
C09-1



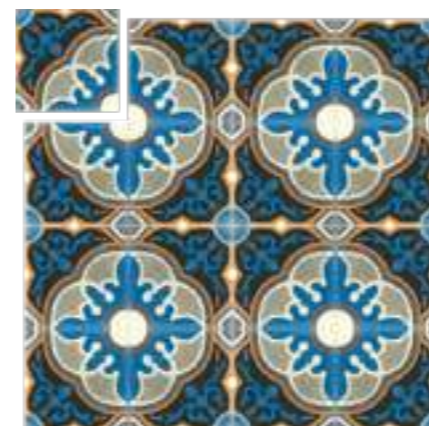
C04-6



C04-7



C04-8



C09-2



C10



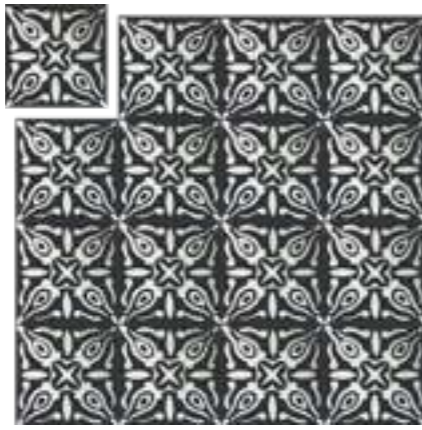
C10-1

CLASSIC

CLASSIC



C11-1



C12



C13-1



C14



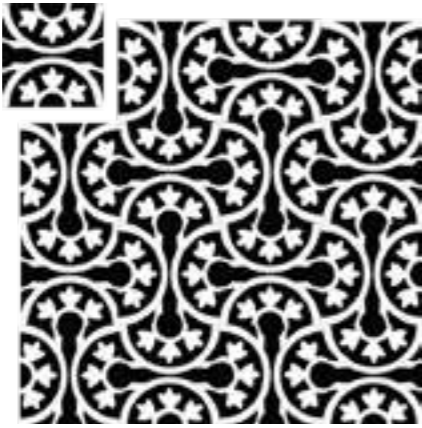
C15-1



C15-2



C16



C17



C17-1



C18



C19-1



C20-1

FLOREALI



F01



F01-1



F01-2



F01-3



F01-4



F01-5



F01-6



F02-1



F02-2



F02-3



F02-4

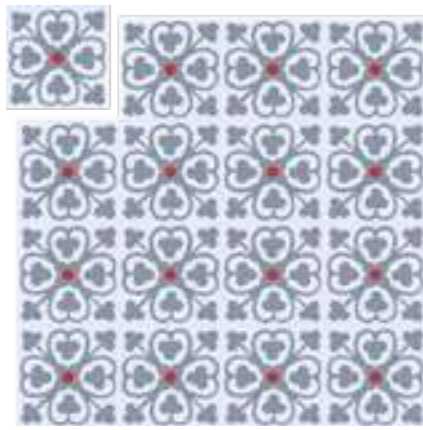


F02-5

FLOREALI



F03-1



F04-1



F05-1



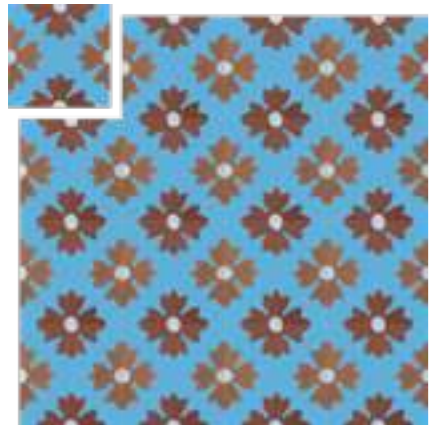
F06-1



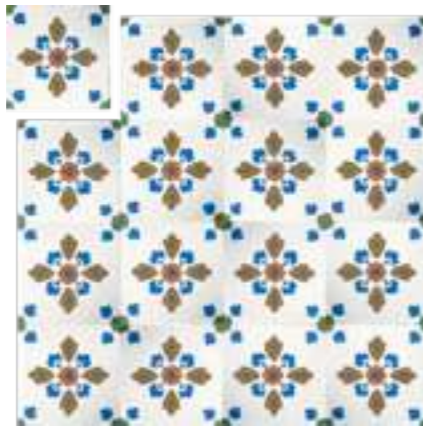
F07-1



F08-1



F09-1



F10-1



F11-1



F12-1

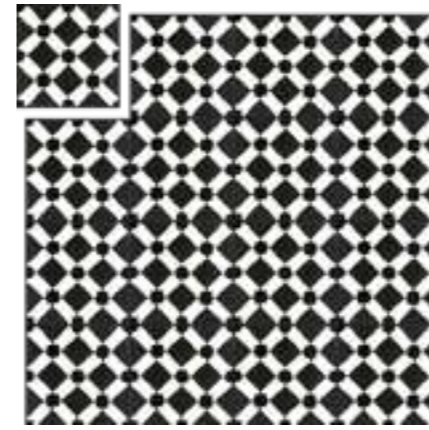


F13-1

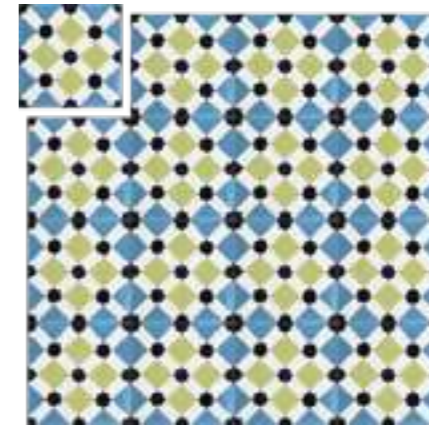


F14-1

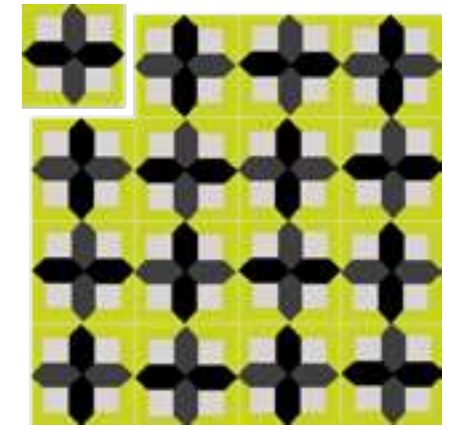
INTRECCI



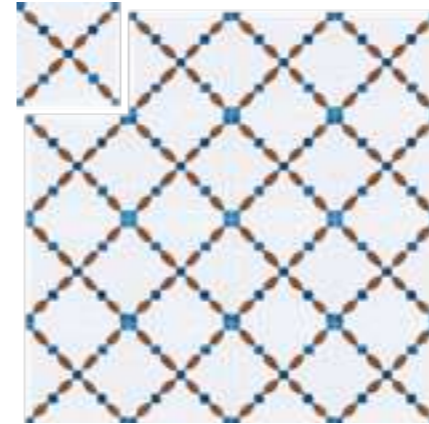
I01



I01-1



I02-1



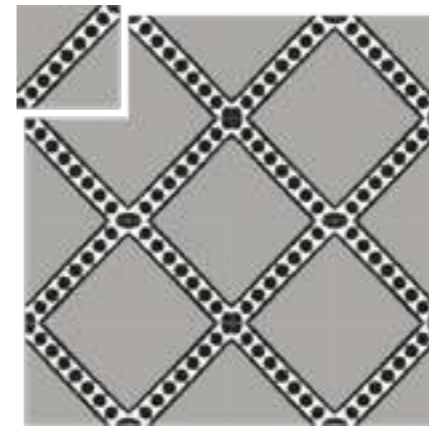
I03-1



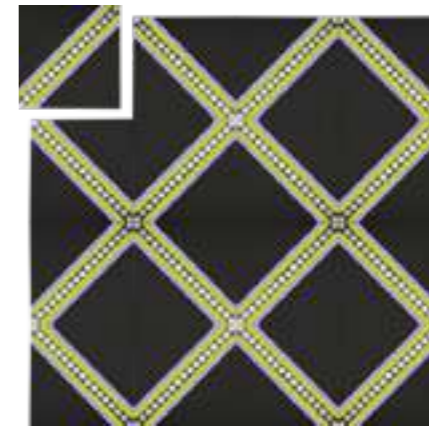
I03-2



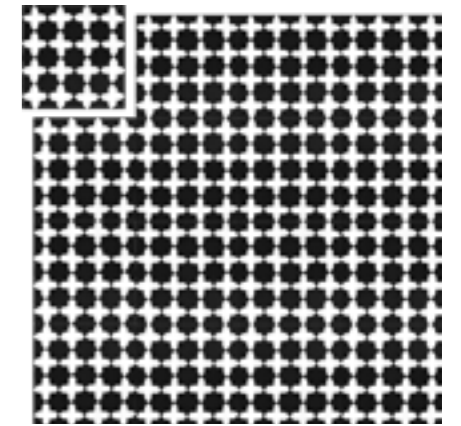
I04



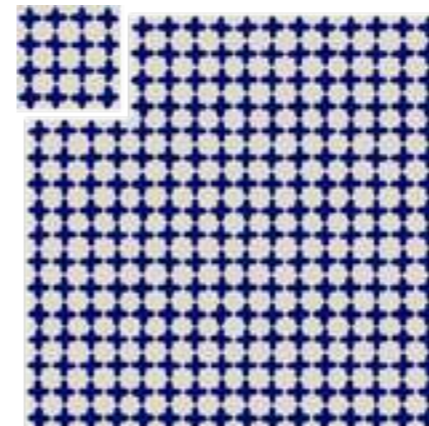
I05



I06-1



I07



I07-1



I08-1

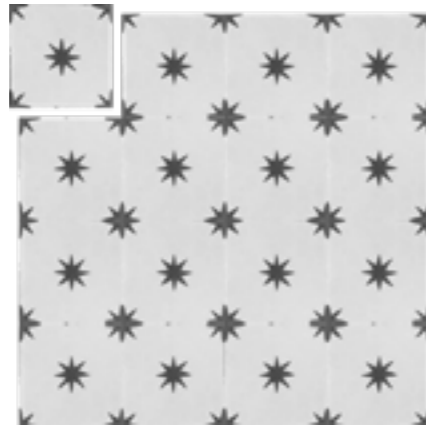


I08-2

STELLE E NATURA



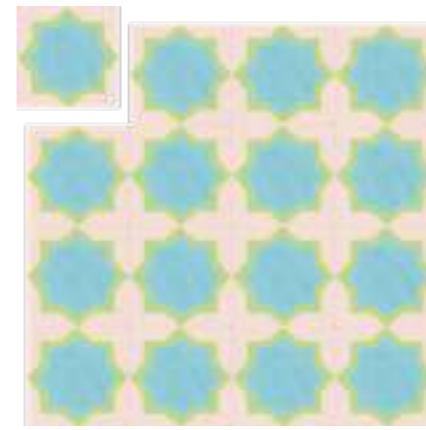
S01



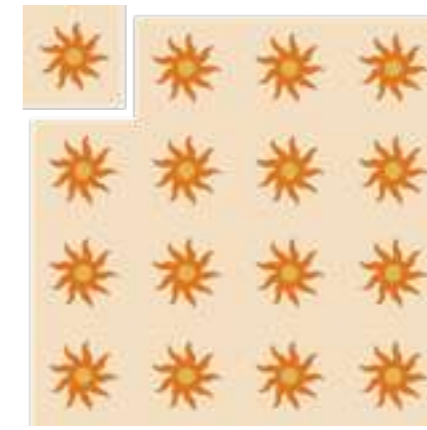
S01-1



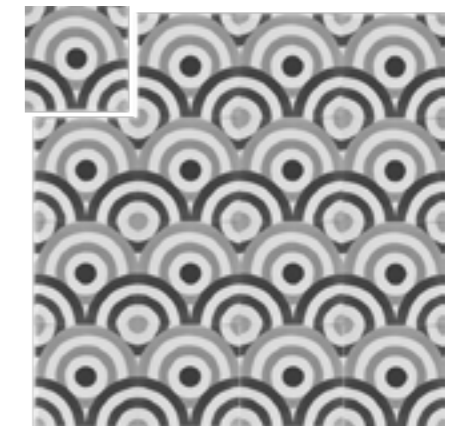
S01-2



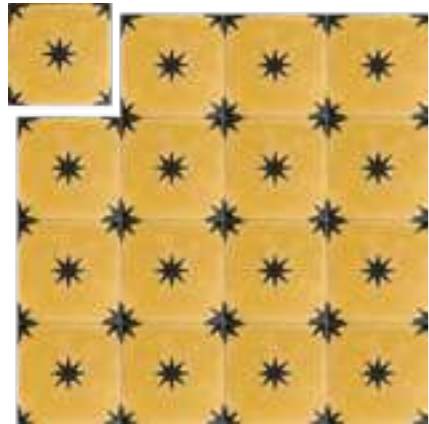
S05-1



N01-1



N02



S01-3



S01-4



S01-5



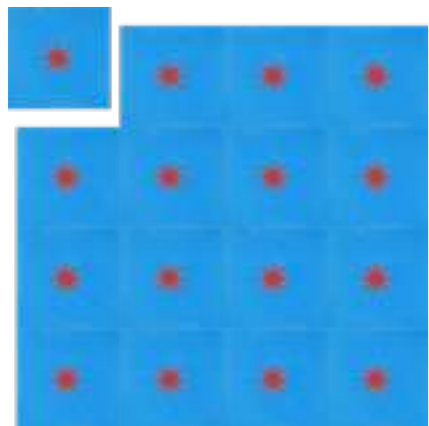
N02-1



N03-1



N04-1



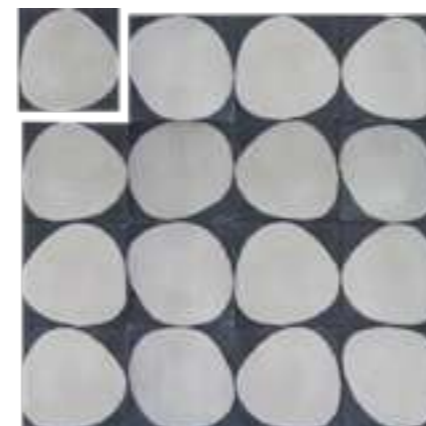
S02-1



S03-1



S03-2



N05



N05-1



N05-2



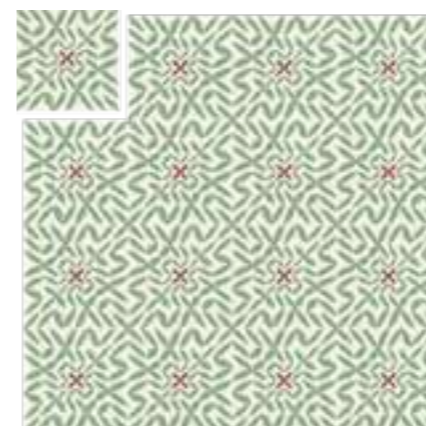
S04



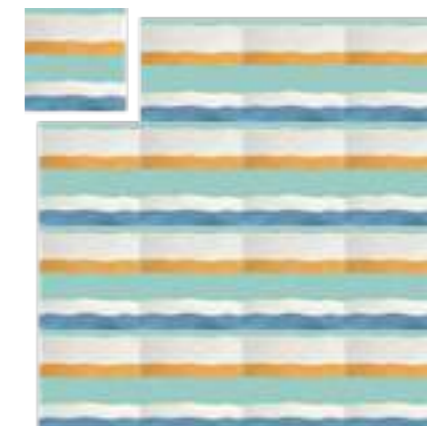
S04-1



S04-2



N06-1



N07-1



N07-2

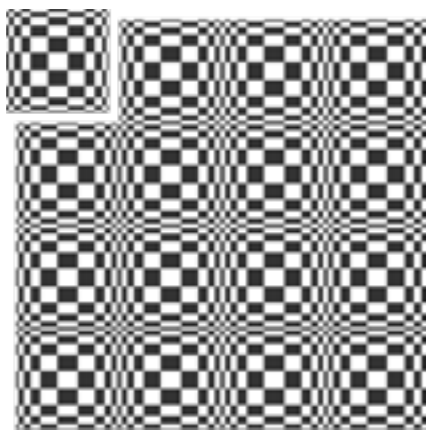
STELLE E NATURA

OPTIC

OPTIC



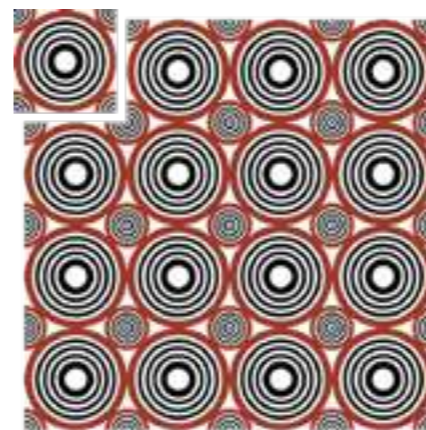
O01



O02



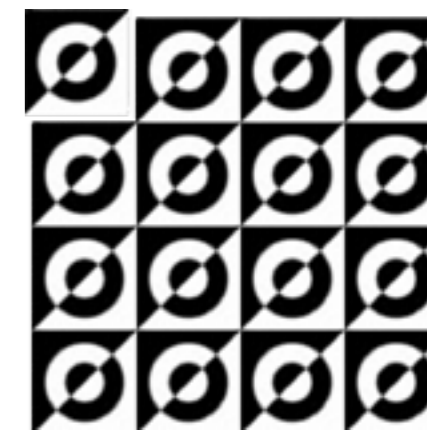
O03



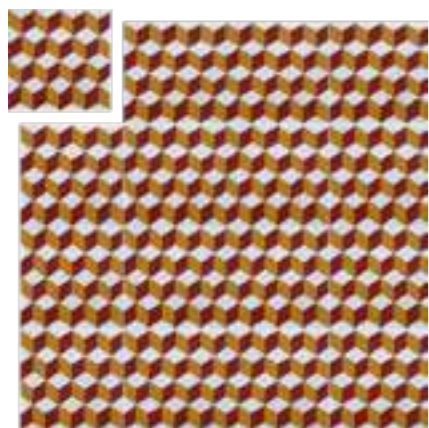
O11-1



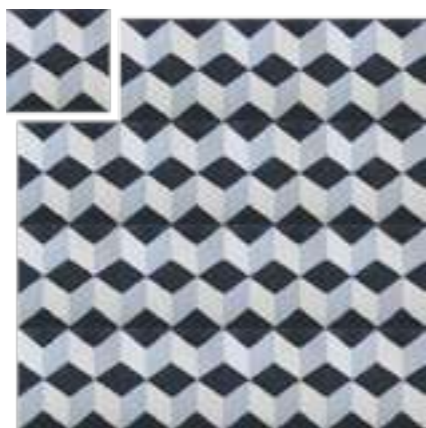
O12



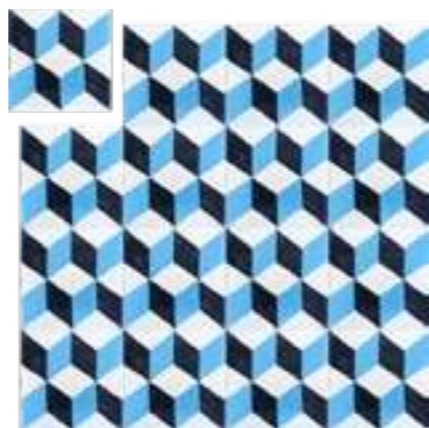
O13



O04-1



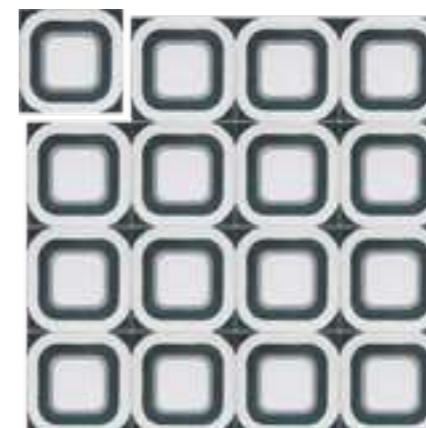
O05



O05-1



O14-1



O15



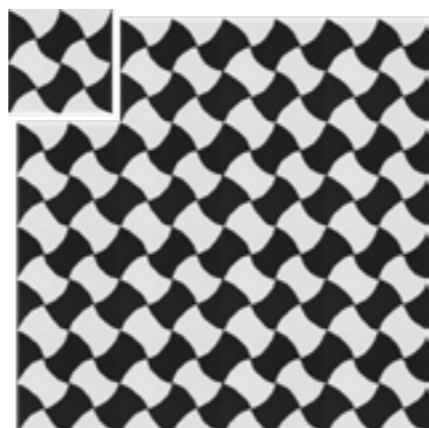
O16



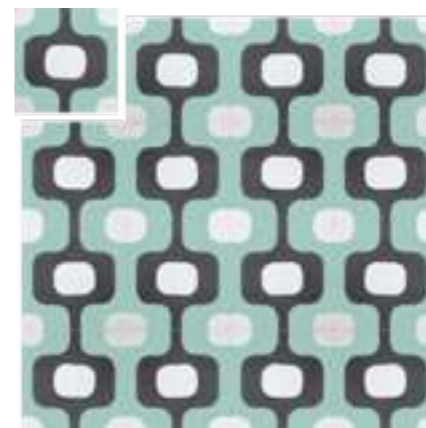
O06



O06-1



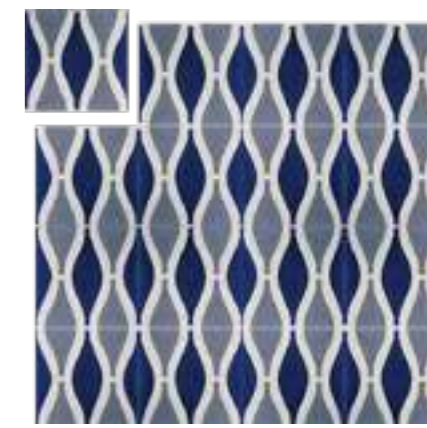
O07



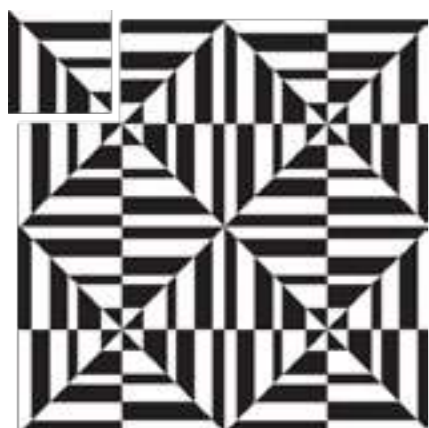
O17-1



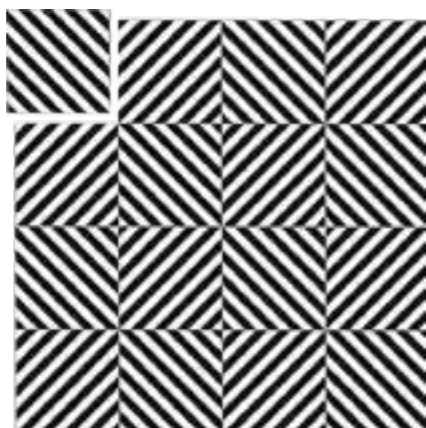
O18-1



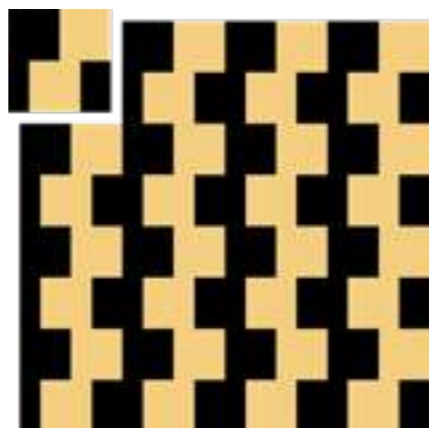
O19-1



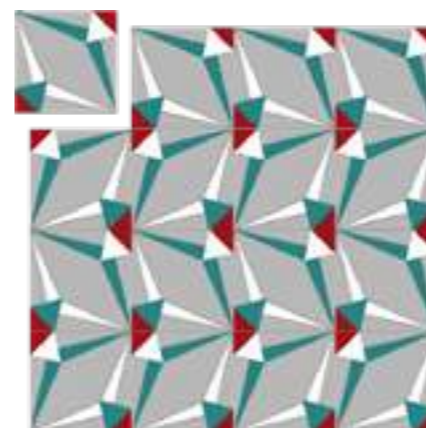
O08



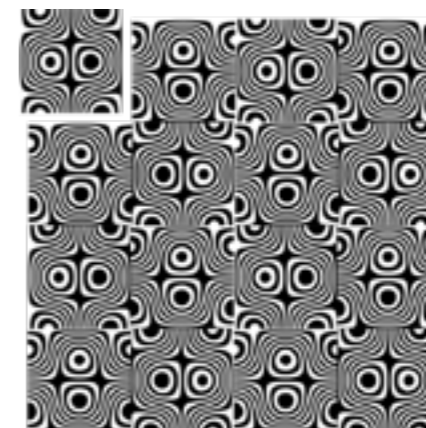
O09



O10-1



O20-1



O21

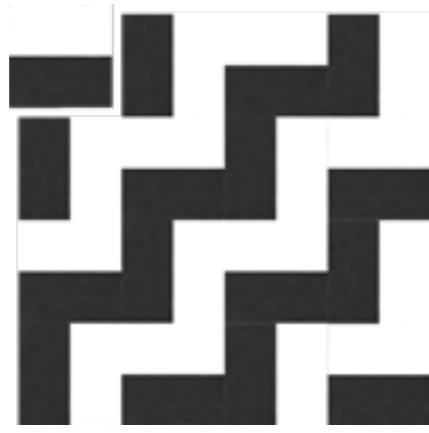


O22-1

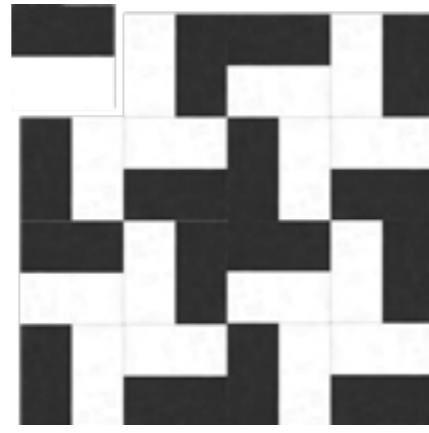
GEOMETRIE



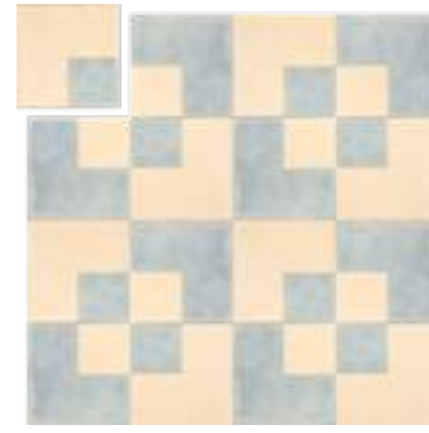
G01



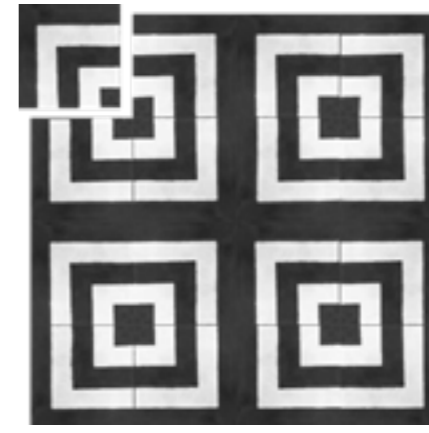
G01



G01



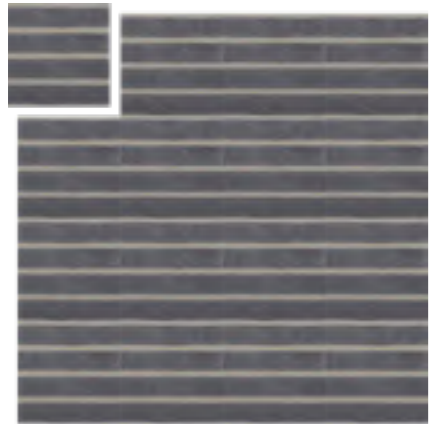
G07-1



G08



G08-1



G02



G02



G03



G09



G09



G10



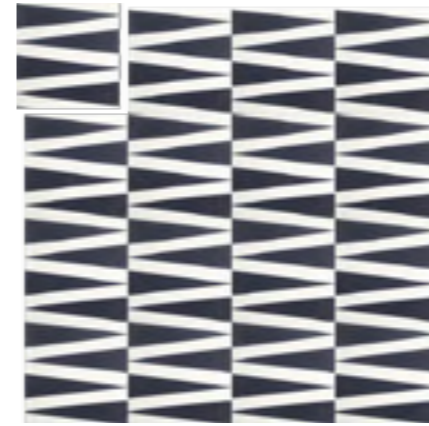
G03



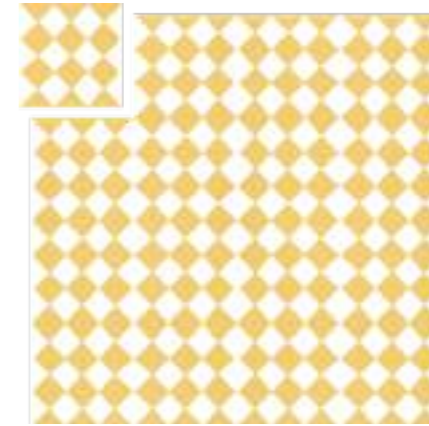
G04



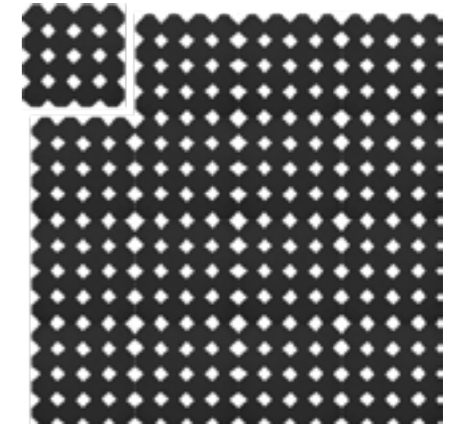
G04



G10



G11-1



G12



G05-1



G05-1



G06-1



G13



G14



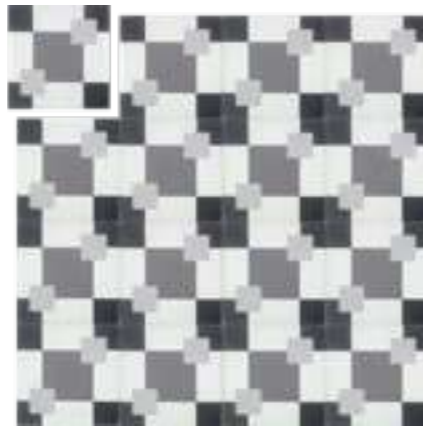
G15

GEOMETRIE

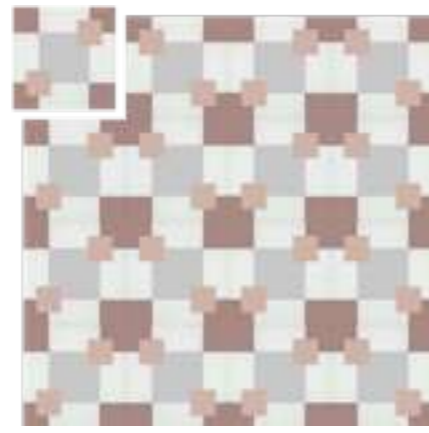
GEOMETRIE



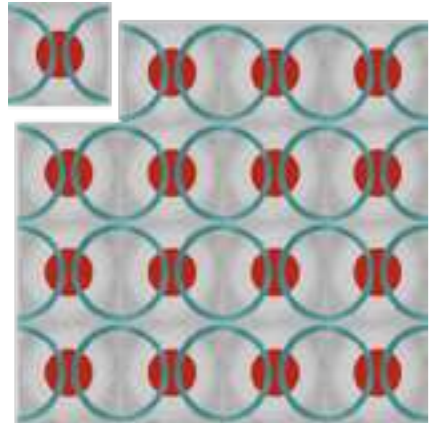
G16-1



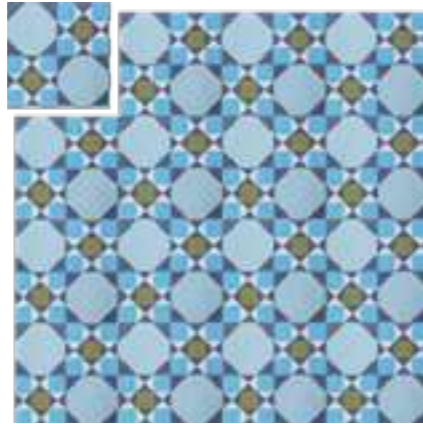
G17



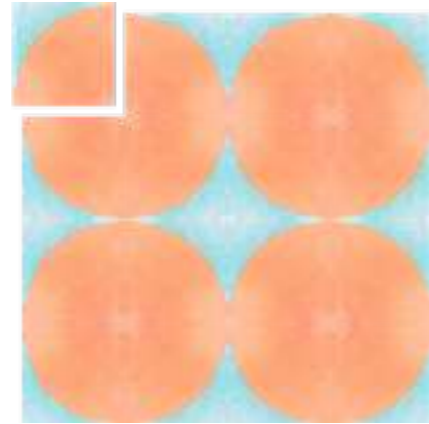
G17-1



G18-1



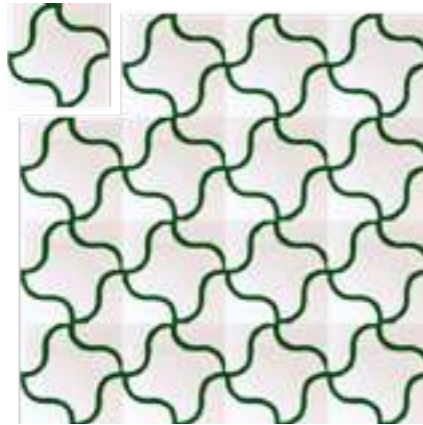
G19-1



G20-1



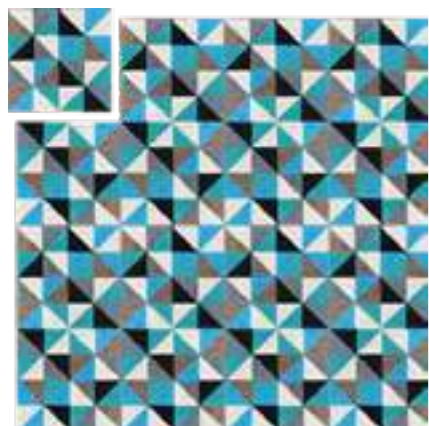
G21



G22-1



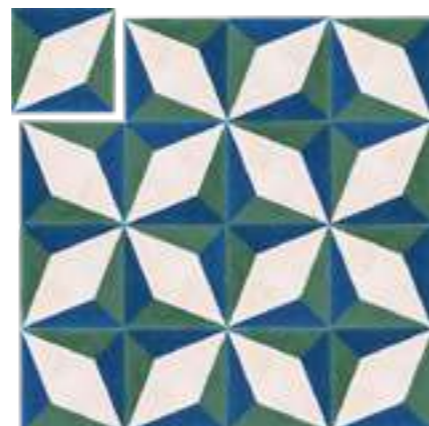
G23-1



G24-1



G25-1

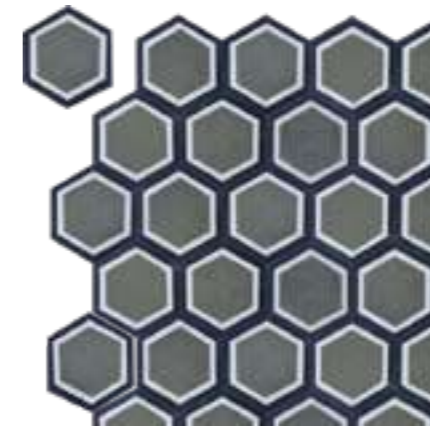


G25-2

ESAGONALI



E01



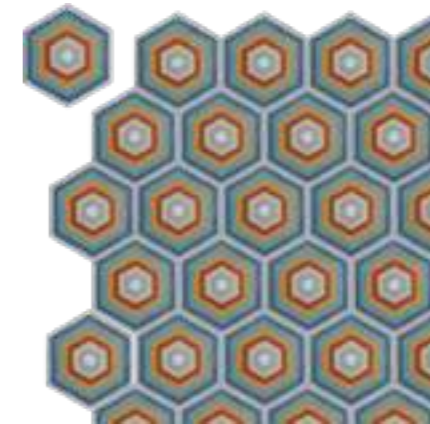
E02



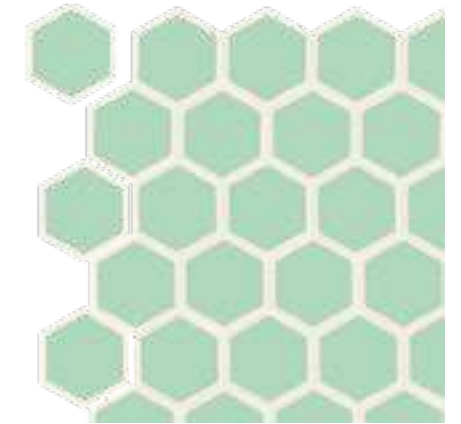
E02-1



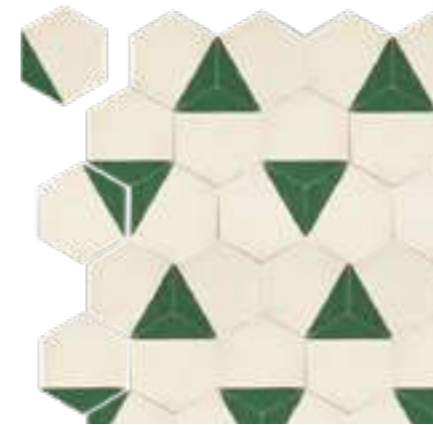
E03-1



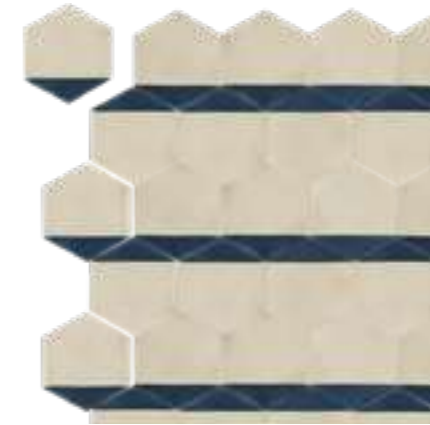
E03-2



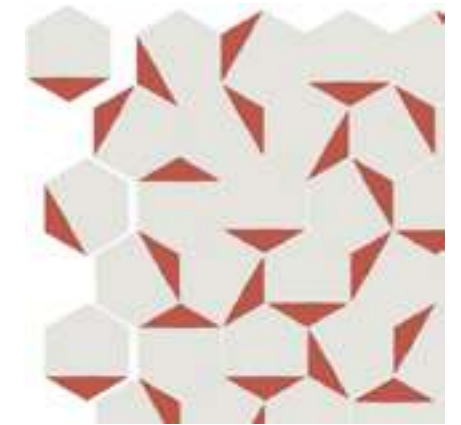
E04-1



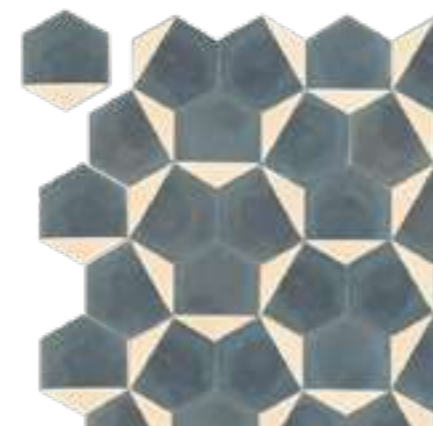
E05-1



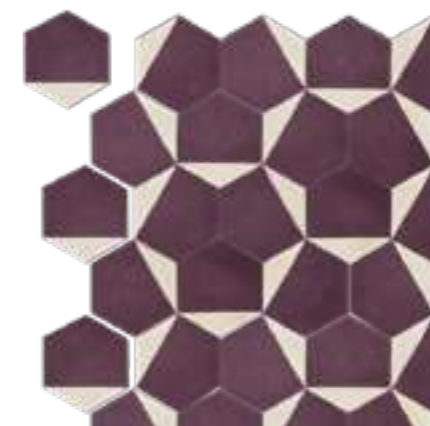
E05-2



E05-3



E05-4

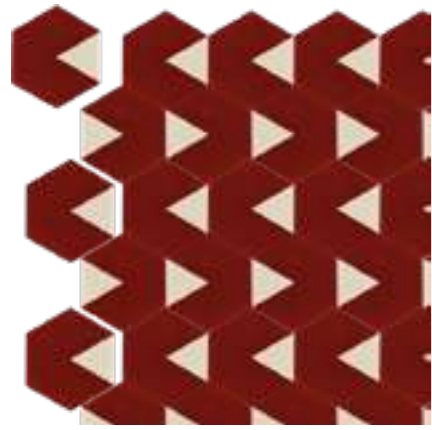


E05-5

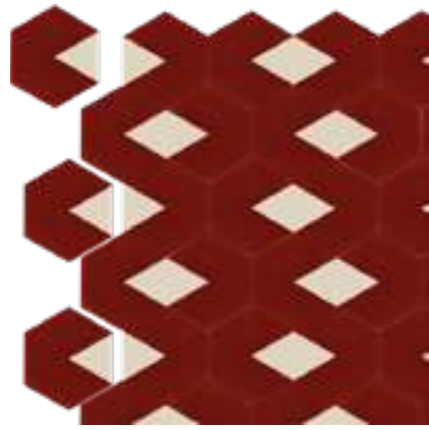


E05-6

ESAGONALI



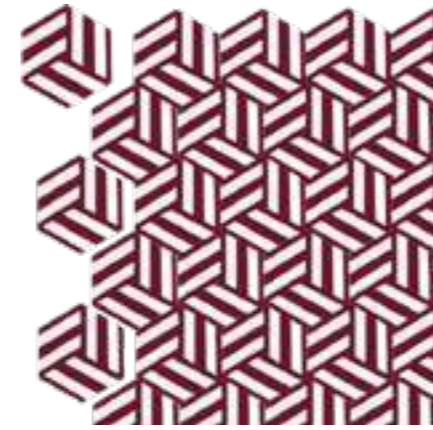
E06-1



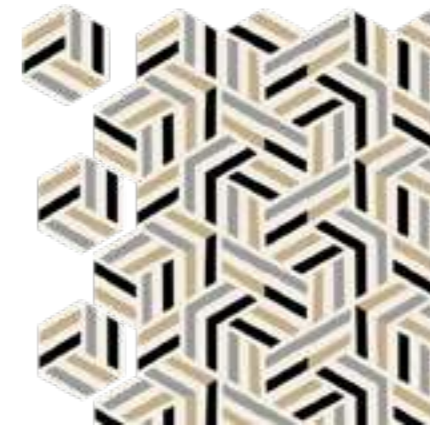
E06-1



E06-1



E12-1



E12-2



E13-1



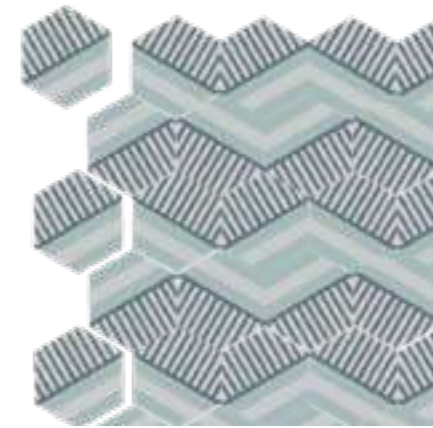
E07-1



E07-1



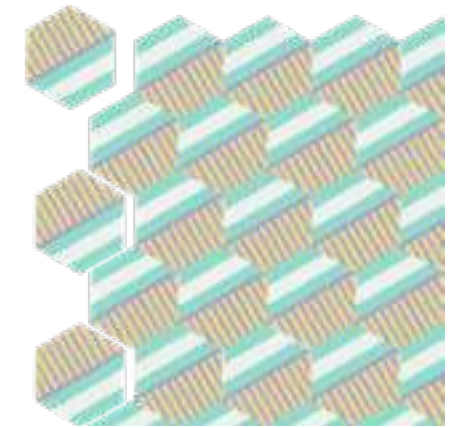
E07-1



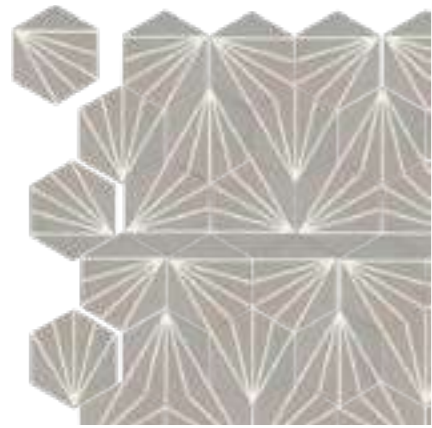
E14-1



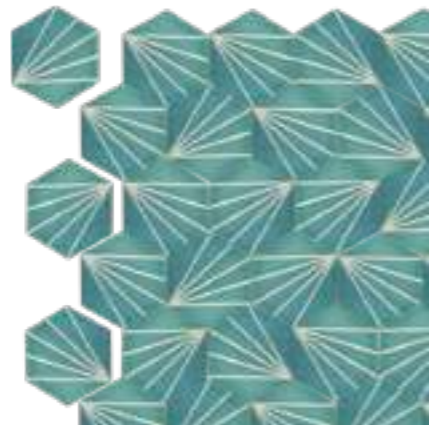
E14-2



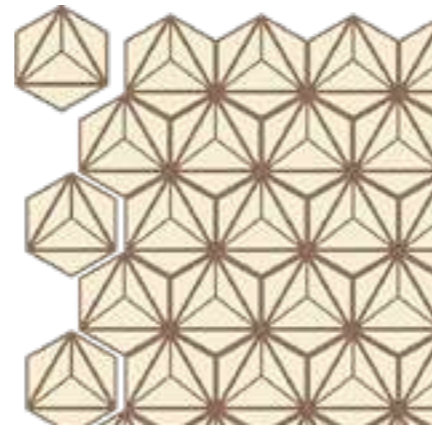
E14-3



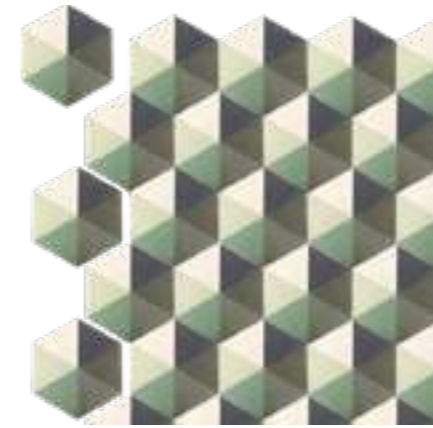
E08-1



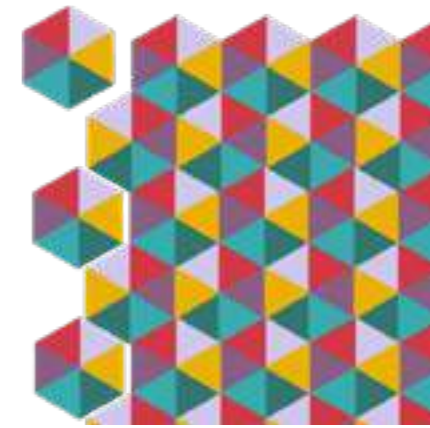
E08-2



E09-1



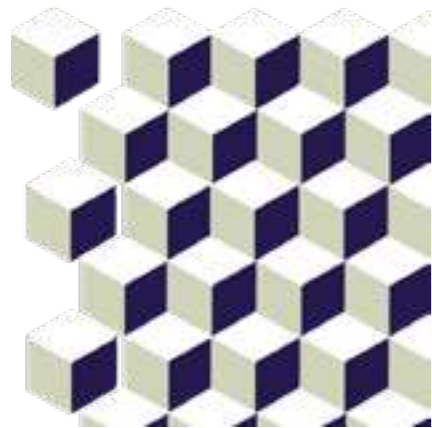
E15-1



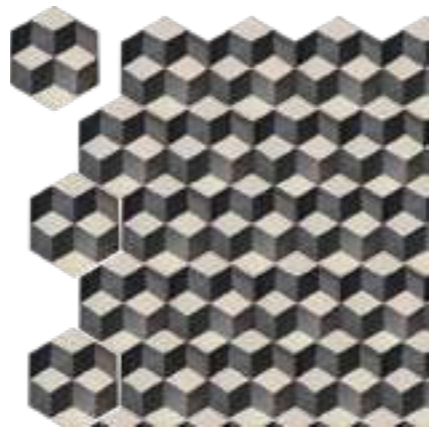
E15-2



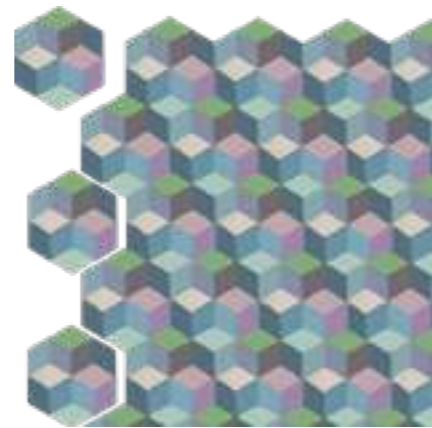
E15-3



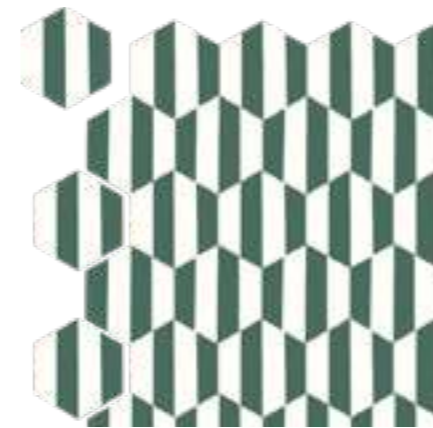
E10-1



E11



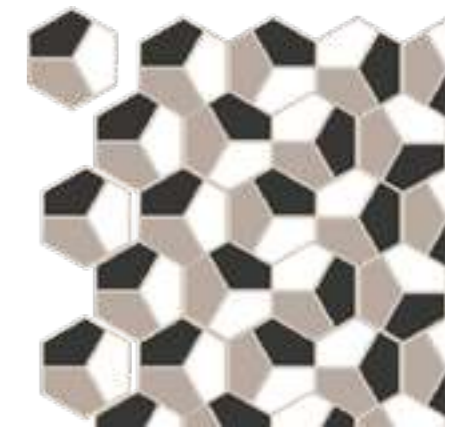
E11-1



E16-1



E17-1



E18-1

ESAGONALI

BORDURE



B01-1



B02-1



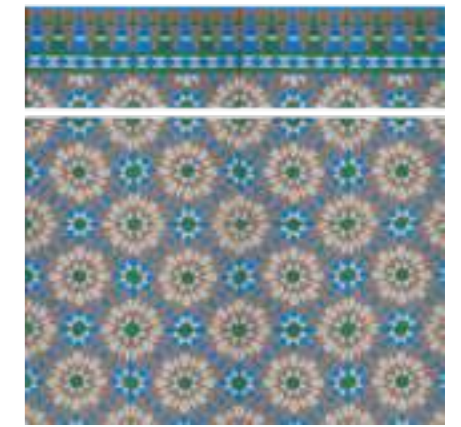
B03-1



B09



B10



B11-1



B04



B04-1



B05-1



B12-1



B13-1



B14-1



B06-1



B06-2



B07-1



B07-2



B08-1



B08-2

BORDURE

FORMATI SPECIALI



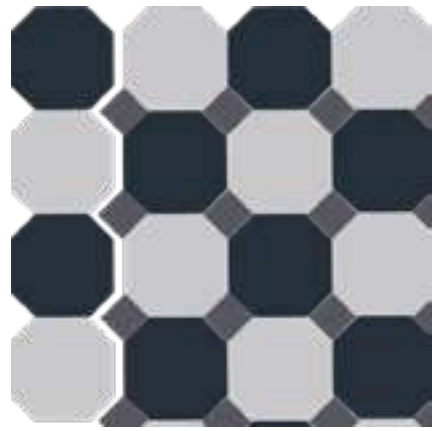
Losanga 01



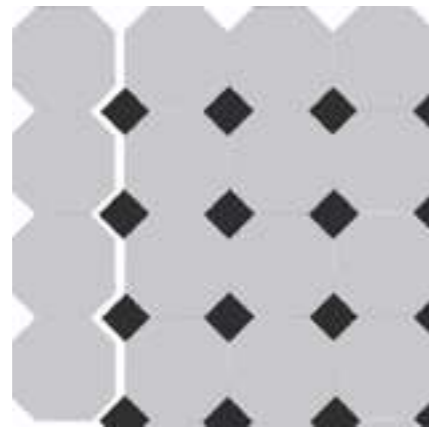
Losanga 01-1



Losanga 01-2



Ottogonale 01-1



Ottogonale 01-2



Ottogonale 01-3



Battiscopa in tinta unita blu



Battiscopa 01



Battiscopa 02



Rettangolo in tinta unita 10x20

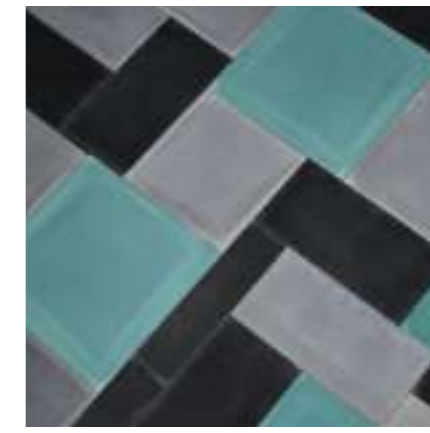


Rettangolo in tinta unita 5x20

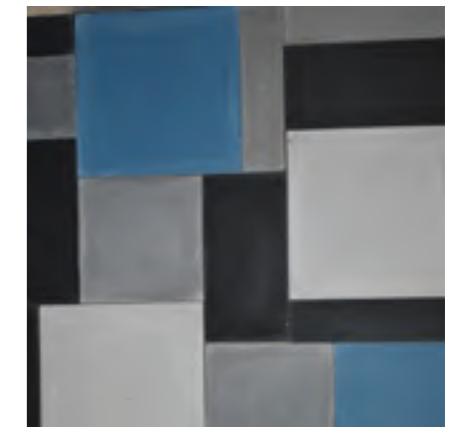
ESEMPI DI COMBINAZIONI



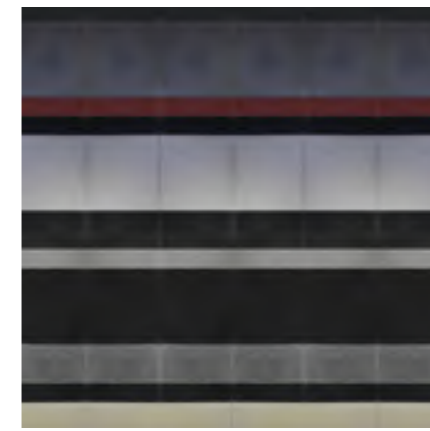
01



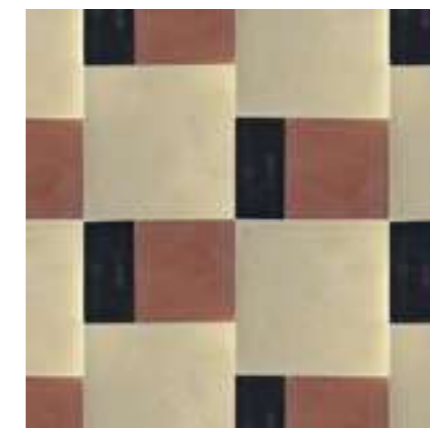
02



03



04



05



06



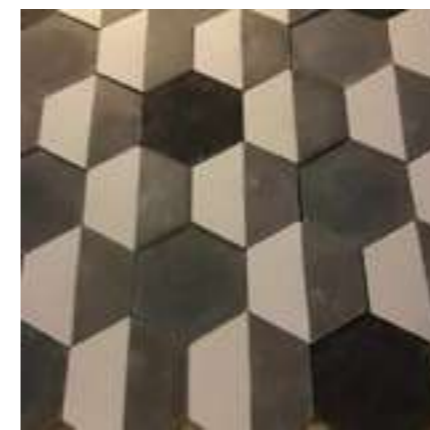
07



08



09



10



11



12

POSA IN OPERA

SOTTOFONDO

Il massetto deve essere realizzato ad una quota inferiore di 18/20 mm circa dal piano finito per la posa con collanti deformabili ad alte prestazioni tipo H40 o similari.

Il sottofondo deve essere totalmente asciutto e pulito. L'evaporazione dell'umidità residua nel massetto può causare delle efflorescenze o macchie sulla superficie delle cementine.

Nel caso di un sottofondo particolarmente umido e di difficile asciugatura si consiglia l'uso di un protettivo pre-posa antirisalita da applicare sul retro delle cementine o l'utilizzo di una barriera al vapore sul massetto.

POSA

Eseguire la posa a colla cementizia fissando le piastrelle sul sottofondo mediante la semplice pressione delle mani evitando di martellare. La colla dovrà essere applicata sia sul retro della mattonella che sul fondo in maniera uniforme tramite spatola dentata, avendo cura di lasciare uno spazio di 2 mm tra le stesse.

Prima della posa è possibile utilizzare un protettivo per facilitare le operazioni di fugatura e ripulitura successive.



STUCCATURA

Utilizzare un trattamento pre stuccatura. Se non è stato utilizzato è indispensabile bagnare bene il pavimento per ridurre l'assorbimento del sigillante. Rimuovere gli eccessi immediatamente con straccio umido o spugna. Le fughe dovranno essere di 1,5/2,0 mm circa e lo stucco liquido per penetrare in profondità.

Il pavimento dovrà essere perfettamente livellato, non è possibile levigare successivamente le piastrelle.

Eventuali macchie od eccessi di sigillante dovranno essere rimosse prima possibile con abbondante acqua e/o con spugnette abrasive tipo Scotch Brite. Si consiglia di stuccare 5/6 mq alla volta e ripulire subito. Per macchie persistenti carta abrasiva 600 e ripassare successivamente con grana 1000.

Per la pulizia finale prima del trattamento effettuare un lavaggio con uno straccio o monospazzola ed un detergente neutro. Sciacquare accuratamente con abbondante acqua.



TRATTAMENTO

Prima di eseguire qualsiasi trattamento di protezione a solvente il pavimento deve essere totalmente asciutto e pulito. Un trattamento precoce potrebbe bloccare l'evaporazione dell'umidità residua nel pavimento e causare delle macchie sulla superficie.

Effettuare un primo trattamento idrorepellente di profondità mediante applicazione di due mani di idrorepellente e dopo un antimacchia.

Consulta la scheda di RIEPILOGO

Per la finitura e ravvivare i colori si possono usare delle cere liquide o in pasta lucide o satinare.

MANUTENZIONE

Per la pulizia ordinaria si consiglia l'uso di un sapone neutro tipo sapone di Marsiglia o DETERGON evitando detergenti acidi o particolarmente aggressivi e passare periodicamente detergenti a cera o prodotti simili senza eccedere nell'uso.

Ogni 2/3 mesi, effettuare la manutenzione con la cera denominata LOOKING anche diluita in acqua, per il ripristino dello strato di cera.

Per rimuovere macchie particolarmente resistenti utilizzare una spugna abrasiva tipo Scotch-Brite ed un detergente non acido.

Per condizioni speciali come locali pubblici o problemi di posa. Chiamateci.





YANN

+39-3319494132
office@lecementine.it

+39-3926189065
www.lecementine.it

+39-3922118502
customer@lecementine.it